

# Parallel compression connectors, KLZ

## FEATURES & BENEFITS



connector Cu, with galvanic tin plating, to make "parallel compression" cable connections

## LOGISTIC DATA

Quantity in package [pcs] 100

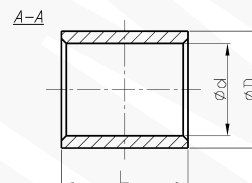
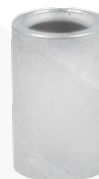
## MECHANICAL DATA

Material Cu

Covering tin-plated

## CRIMPING SHAPE

Number of crimping - narrow 1-1



Type	Index Ergom	Cross-section [mm <sup>2</sup> ]	L	d	D	Weight [kg]
KLZ 1 (100 PCS)	E11KM-02070100101	0,5+1	8	1,6	3,2	0,05
KLZ 2,5 (100 PCS)	E11KM-02070100201	1+2,5	8	2,3	3,9	0,06
KLZ 6 (100 PCS)	E11KM-02070100301	4+6	9	3,6	5,6	0,11
KLZ 10 (100 PCS)	E11KM-02070100401	10	10	4,5	6,7	0,15