

Insulated "butt splice" connectors, KLI type

FEATURES & BENEFITS

- connector Cu, with polyamide insulation, to make "butt splice" cable connections
- central stamping guarantees correct length of conductor insertion
- insulating sleeve: enhances resistance to vibrations, mitigates short-circuit risk, facilitates cable installation
- sleeve colours facilitate cross-section identification

LOGISTIC DATA

Quantity in package [pcs] 100

MECHANICAL DATA

Insulation polyamide 6.6

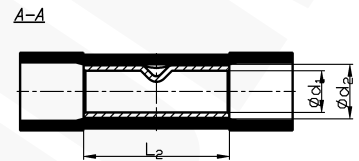
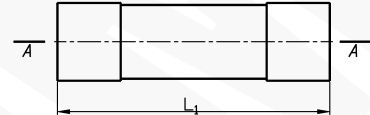
Material Cu

Covering tin-plated

Operating temperature [°C] -30 ÷ +95

CERTIFICATES & STANDARDS

Technical approval PRS TE/2241/880567/19



Type	Index Ergom	Cross-section [mm ²]	Insulation colour	L ₁	L ₂	d ₁	d ₂	Weight [kg]
KLI 0,5 (100 PCS)	E09KO-02060100101	0,2+0,5	yellow	20,0	12	1,3	2,0	0,04
KLI 1 (100 PCS)	E09KO-02060100201	0,75+1,0	red	27,3	15	1,7	3,2	0,11
KLI 2,5 (100 PCS)	E09KO-02060100301	1,5+2,5	blue	27,3	15	2,3	3,8	0,14
KLI 6 (100 PCS)	E09KO-02060100401	4+6	yellow	28,0	15	3,4	5,3	0,23