



# Tempo – compact and consistent

## Tempo 1 RVP151

Tempo is a complete floodlighting range offering a wide choice of lamp types and symmetrical and asymmetrical reflectors. It is designed for general-purpose floodlighting, and is particularly suited to small- to medium-scale area or surface lighting. The Tempo series' compact housing guarantees optimum visual integration. Anodized-aluminum reflectors ensure a highly efficient beam distribution, while the nylon bolt caps feature a goniometric aiming device for easy adjustment and alignment. A universal mounting bracket allows ceiling, wall or surface mounting with a wide range of adjustment for both down- and uplighting. Tempo's all-weather construction is designed to make cleaning and servicing easy and fast. Access to the lamp and gear is simple, via the hinged front glass with its quick-release stainless-steel clips. All Tempo luminaires are RoHS-compliant.

### Benefits

- Complete floodlighting range with a wide choice of lamp types and symmetrical or asymmetrical reflectors for highly efficient beam distribution
- Ideal for a variety of outdoor applications from architectural, facade and billboard lighting to area and (leisure) sports lighting
- Optimal visual integration with compact housing and metallic grey finish

### Features

- Wide choice of lamp types
- Symmetrical and asymmetrical reflectors
- Compact housing with metallic grey finish
- Aiming device
- Hinged front glass with quick-release clips

### Application

- Facades
- Billboards
- Architectural lighting

# Tempo 1 RVP151

## Specifications

<b>Type</b>	RVP151
<b>Light source</b>	HID: <ul style="list-style-type: none"><li>- 1 x MASTERColour CDM-TD / RX7s / 70 W</li><li>- 1 x MHN-TD / RX7s / 70 W</li><li>- 1 x SON-TPP / E27 / 70 W</li></ul>
<b>Lamp included</b>	Yes (K or light color 830) No
<b>Mains voltage</b>	230 or 240 V
<b>Gear and compensation (Integrated)</b>	Electromagnetic (low loss), 230 V / 50 Hz: <ul style="list-style-type: none"><li>- Inductive (IN)</li><li>- Inductive, parallel compensated (IC)</li></ul>
<b>Optic</b>	Asymmetrical (A) Symmetrical (S)
<b>Materials and finishing</b>	Housing: die-cast aluminum, corrosion-resistant powder coating Glass: thermally hardened, 4 mm thick Gasket: premium bonded silicone Mounting bracket: steel Aiming device cap: nylon Fixation clips: stainless steel Reflector: anodized, high-purity aluminum

<b>Color</b>	Grey, RAL 9007, powder-coated Color-matched bracket, grommet and hinges
<b>Installation</b>	Ceiling, wall or floor mounting Cable entry via M20 cable gland Ambient temperature outdoor: 35°C Drag factor (SCx): 0.08 m Max adjustment from the horizontal: 175°
<b>Maintenance</b>	Hinged front glass with quick-release clips for in-position lamp replacement No internal cleaning required
<b>Main applications</b>	Area, facade, billboard, architectural lighting

## Versions

Tempo 1 RVP151 area flood-lighting luminaire



## Product details

Rear view



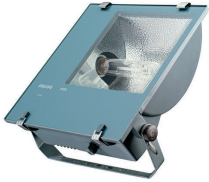
Aiming device for easy adjustment and alignment



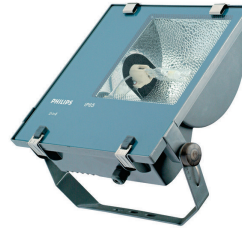
# Tempo 1 RVP151

## Product details

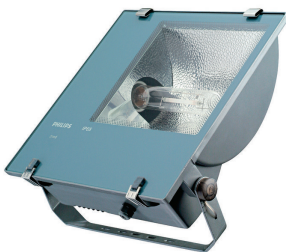
Tempo 1 RVP151



Tempo 2 RVP251



Tempo 3 RVP351



### Approval and Application

Mech. impact protection code	IK07
<b>General Information</b>	
CE mark	CE mark
Optical cover/lens type	Flat glass
ENEC mark	-
Gear	CONV
Number of light sources	1 pc
<b>Light Technical</b>	
Upward light output ratio	0
<b>Mechanical and Housing</b>	
Color	Gray

### Approval and Application

Order Code	Full Product Name	Surge Protection (Common/Differential)
910502556118	RVP151 SON-TPP70W K IC S	-
910502556218	RVP151 SON-TPP70W K IC A	-
910502556318	RVP151 CDM-TD70W/830 IC S	-
910502556418	RVP151 CDM-TD70W/830 IC A	-
910503694918	RVP151 MHN-TD70W IC S	-
910503695018	RVP151 MHN-TD70W IC A	-
912401483015	RVP151 SON-TPP70W K IC S	-
912401483016	RVP151 SON-TPP70W K IC A	-
912401483017	RVP151 MHN-TD70W IC S	-
912401483018	RVP151 MHN-TD70W IC A	-

### Controls and Dimming

Order Code	Full Product Name	Dimmable	Order Code	Full Product Name	Dimmable
910502556118	RVP151 SON-TPP70W K IC S	No	910503695018	RVP151 MHN-TD70W IC A	No
910502556218	RVP151 SON-TPP70W K IC A	No	912401483015	RVP151 SON-TPP70W K IC S	-
910502556318	RVP151 CDM-TD70W/830 IC S	No	912401483016	RVP151 SON-TPP70W K IC A	-
910502556418	RVP151 CDM-TD70W/830 IC A	No	912401483017	RVP151 MHN-TD70W IC S	-
910503694918	RVP151 MHN-TD70W IC S	No	912401483018	RVP151 MHN-TD70W IC A	-

### General Information (1/2)

# Tempo 1 RVP151

Order Code	Full Product Name	Luminaire			Lamp family code
		light beam spread	Light source color	Flammability mark	
910502556118	RVP151 SON-TPP70W K IC S	-	220 gold	-	SON-TPP
910502556218	RVP151 SON-TPP70W K IC A	-	220 gold	-	SON-TPP
910502556318	RVP151 CDM-TD70W/830 IC S	-	830 warm white	-	CDM-TD
910502556418	RVP151 CDM-TD70W/830 IC A	-	830 warm white	-	CDM-TD
910503694918	RVP151 MHN-TD70W IC S	-	842 neutral white	-	MHN-TD

Order Code	Full Product Name	Luminaire			Lamp family code
		light beam spread	Light source color	Flammability mark	
910503695018	RVP151 MHN-TD70W IC A	-	842 neutral white	-	MHN-TD
912401483015	RVP151 SON-TPP70W K IC S	-	220 gold	-	SON-TPP
912401483016	RVP151 SON-TPP70W K IC A	-	220 gold	-	SON-TPP
912401483017	RVP151 MHN-TD70W IC S	-	842 neutral white	-	MHN-TD
912401483018	RVP151 MHN-TD70W IC A	-	842 neutral white	-	MHN-TD

## General Information (2/2)

Order Code	Full Product Name	Lamp power	Number of gear		Optic type
			units		
910502556118	RVP151 SON-TPP70W K IC S	70 W	-		Symmetrical
910502556218	RVP151 SON-TPP70W K IC A	70 W	-		Asymmetrical
910502556318	RVP151 CDM-TD70W/830 IC S	70 W	-		Symmetrical
910502556418	RVP151 CDM-TD70W/830 IC A	70 W	-		Asymmetrical
910503694918	RVP151 MHN-TD70W IC S	70 W	-		Symmetrical

Order Code	Full Product Name	Lamp power	Number of gear		Optic type
			units		
910503695018	RVP151 MHN-TD70W IC A	70 W	-		Asymmetrical
912401483015	RVP151 SON-TPP70W K IC S	-	1 unit		Symmetrical
912401483016	RVP151 SON-TPP70W K IC A	-	1 unit		Asymmetrical
912401483017	RVP151 MHN-TD70W IC S	-	1 unit		Symmetrical
912401483018	RVP151 MHN-TD70W IC A	-	1 unit		Asymmetrical

## Initial Performance (IEC Compliant)

Order Code	Full Product Name	Init. Corr. Color	
		Temperature	Rendering Index
910502556118	RVP151 SON-TPP70W K IC S	2000 K	25
910502556218	RVP151 SON-TPP70W K IC A	2000 K	25
910502556318	RVP151 CDM-TD70W/830 IC S	3000 K	80
910502556418	RVP151 CDM-TD70W/830 IC A	3000 K	80
910503694918	RVP151 MHN-TD70W IC S	4200 K	80

Order Code	Full Product Name	Init. Corr. Color	
		Temperature	Rendering Index
910503695018	RVP151 MHN-TD70W IC A	4200 K	80
912401483015	RVP151 SON-TPP70W K IC S	2000 K	25
912401483016	RVP151 SON-TPP70W K IC A	2000 K	25
912401483017	RVP151 MHN-TD70W IC S	4200 K	80
912401483018	RVP151 MHN-TD70W IC A	4200 K	80

## Light Technical

Order Code	Full Product Name	Standard tilt angle	
		side entry	posttop
910502556118	RVP151 SON-TPP70W K IC S	-	-
910502556218	RVP151 SON-TPP70W K IC A	-	-
910502556318	RVP151 CDM-TD70W/830 IC S	-	-
910502556418	RVP151 CDM-TD70W/830 IC A	-	-
910503694918	RVP151 MHN-TD70W IC S	-	-

Order Code	Full Product Name	Standard tilt angle	
		side entry	posttop
910503695018	RVP151 MHN-TD70W IC A	-	-
912401483015	RVP151 SON-TPP70W K IC S	-	-
912401483016	RVP151 SON-TPP70W K IC A	-	-
912401483017	RVP151 MHN-TD70W IC S	-	-
912401483018	RVP151 MHN-TD70W IC A	-	-

