

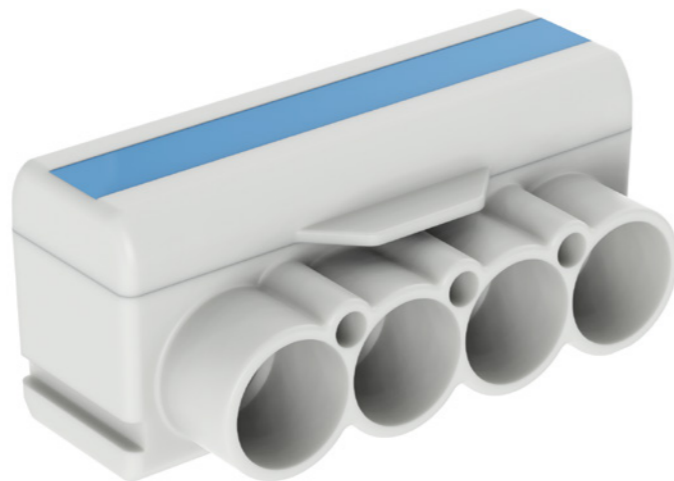
# Distribution blocks SLT

1000 V  
AC/DC

Bimetal  
(AL/CU)

Class A

Certified according to standards EN 61238-1 and EN 60947-7-1

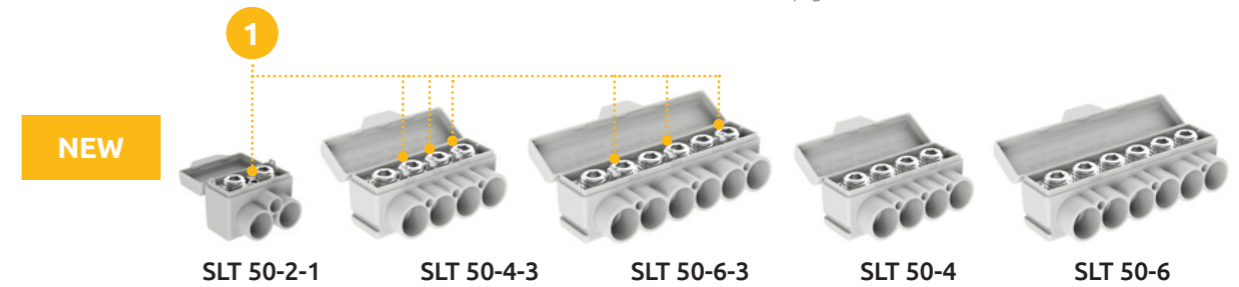


Distribution blocks are designed for copper and aluminium conductors. The blocks are suitable for all types of copper or aluminium conductors with cross-section up to 50 mm<sup>2</sup> (Al) / 35 mm<sup>2</sup> (Cu). Multiple copper wires can be placed to the blocks according to the respective terminal type. IP protection class for blocks is IP23. SLT distribution blocks come in 2-, 4- and 6-terminal sizes, with some models providing additional connection (1) points for connecting small conductors (e.g. LED lights).

Distribution blocks are tested and certified class A connectors. Distribution blocks are tested and certified by following standards: \* EN 60947-7-1:2009, \* EN 61238-1:2003

Distribution blocks are used inside metal poles or in separate boxes. The items are soon available with DIN rails!

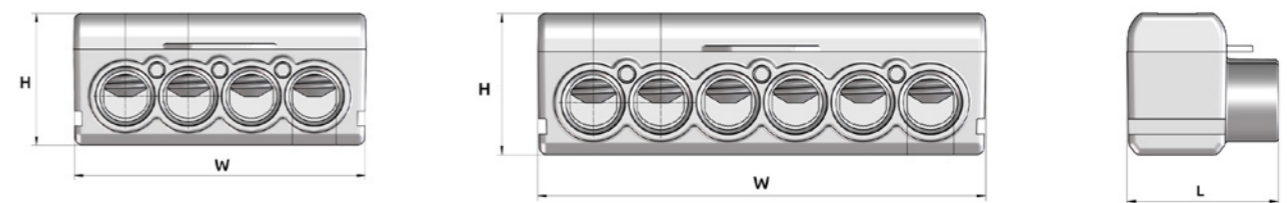
\* Look more about standards on page 8.



Grey	●	MAS2051A10	MAS4051A10	MAS6051A10	MAS4050A10	MAS6050A10
Blue	●	MAS2051B10	MAS4051B10	MAS6051B10	MAS4050B10	MAS6050B10
Yellow-green	●	MAS2051Y10	MAS4051Y10	MAS6051Y10	MAS4050Y10	MAS6050Y10

Technical data	SLT 50-2-1	SLT 50-4-3	SLT 50-6-3	SLT 50-4	SLT 50-6
Conductor cross-section Cu (mm <sup>2</sup> )	2 x (2,5 - 35)	4 x (2,5 ÷ 35) + 3 x 2,5	6 x (2,5 ÷ 35) + 3 x 2,5	4 x (2,5 ÷ 35)	6 x (2,5 ÷ 35)
Conductor cross-section Al (mm <sup>2</sup> )	2 x (16 - 50)	4 x (10 ÷ 50)	6 x (10 ÷ 50)	4 x (10 ÷ 50)	6 x (10 ÷ 50)
Nominal voltage (V)	1000	1000	1000	1000	1000
Nominal current Cu / Al (A)	135 / 145	135 / 145	135 / 145	135 / 145	135 / 145
Width / Height / Length (mm)	36 / 27 / 29	60 / 27 / 29	86 / 27 / 29	60 / 27 / 29	86 / 27 / 29
Screw / hexagonal key (AV)	5	5	5	5	5
Tightening torque (Nm)	3 Nm (2,5-16 mm <sup>2</sup> ) 8 Nm (25-50 mm <sup>2</sup> ) 2 Nm (1,5-6 mm <sup>2</sup> )	3 Nm (2,5-16 mm <sup>2</sup> ) 8 Nm (25-50 mm <sup>2</sup> ) 1Nm (1,5-2,5 mm <sup>2</sup> )	3 Nm (2,5-16 mm <sup>2</sup> ) 8 Nm (25-50 mm <sup>2</sup> ) 1Nm (1,5-2,5 mm <sup>2</sup> )	3 Nm (2,5-16 mm <sup>2</sup> ) 8 Nm (25-50 mm <sup>2</sup> )	3 Nm (2,5-16 mm <sup>2</sup> ) 8 Nm (25-50 mm <sup>2</sup> )
Weight (g)	33	46	70	41,8	61,1
Package (pcs)	18	18	6	18	6

## Dimensions



## SLT DIN rail adapter

The SLT clamp holder is designed for DIN rail mounting longitudinally or transversally and is made with PA66 in grey.

Grey	●	MAS0001A10
<b>Technical data</b>		
Width / Height / Length (mm)	42,5 / 21 / 94	
Weight (g)	17	
Package (pcs)	100	

