



CorePro LEDtube EM/ Mains T8



CorePro LEDtube 1500mm HO 24W 840 T8

Philips CorePro LEDtubes are the quick and easy way to replace T8 fluorescent or other LED tubes with a fast pack back time. Not only does the Core range of LEDtubes require a low initial investment, but LED energy efficiency also delivers instant savings that you can bank on over a long and reliable lifetime. Plus, with the same lamp size and light distribution as fluorescent alternatives, you'll never know the difference. There are two ways to install these LED tubes: Rewire your existing fluorescent-based luminaires so the CorePro LEDtubes work directly on the Mains. Or simply change the fluorescent starter to an LED starter that can be used with your Electromagnetic ballasts.

Warnings and Safety

- NOTE: The overall energy efficiency and light distribution of any installation that uses these lamps will be determined by the design of the installation.
- Installation must be done according to the installation diagrams provided with the lamp or available online. Installation must be done by a certified professional.

Product data

General Information	
Lighting Technology	LED
Flux measurement reference	Sphere
Switching Cycle	200,000
Nominal lifetime	50,000 hour(s)
Cap-Base	G13 [Medium Bi-Pin Fluorescent]

Luminous Flux	2,700 lumen
Color Designation	Cool White (CW)
Correlated Color Temperature (Nom)	4000 K
Luminous Efficacy (rated) (Nom)	112 lm/W
Color Consistency	<6
Color rendering index (CRI)	80
LLMF At End Of Nominal Lifetime (Nom)	70 %
Flickering value (PstLM)	2
Stroboscopic effect value (SVM)	2

Light Technical	
Color Code	840 [CCT of 4000K]
Beam Angle (Nom)	240 degree(s)

CorePro LEDtube EM/Mains T8

Operating and Electrical

Line Frequency	50 to 60 Hz
Input Frequency	50 to 60 Hz
Power Consumption	24 W
Lamp Current (Nom)	120 mA
Starting Time (Nom)	0.5 s
Warm-up time to 60% light	0.5 s
Power Factor (Fraction)	0.9
Voltage (Nom)	220-240 V

Temperature

Ambient temperature range	-20 °C to 45 °C
T-Case Maximum (Nom)	55 °C

Controls and Dimming

Dimmable	No
----------	----

Mechanical and Housing

Bulb Finish	Frosted
Bulb Material	Glass
Product Length	1,500 mm
Bulb Shape	Tube, double-ended

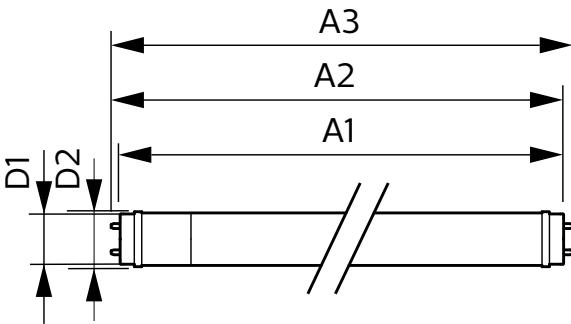
Approval and Application

Energy Efficiency Class	E
Energy Saving Product	Yes
Approval Marks	RoHS compliance CE marking KEMA Keur certificate
Energy Consumption kWh/1000 h	24 kWh
EPREL Registration Number	1384714
CE mark	Yes
EU RoHS compliant	Yes

Product Data

Full product code	871869680617300
Order product name	CorePro LEDtube 1500mm HO 24W 840 T8
Order code	929001875102
Numerator - Quantity Per Pack	1
Numerator - Packs per outer box	10
Material number (12NC)	929001875102
Full product name	CorePro LEDtube 1500mm HO 24W 840 T8
EAN/UPC - Case	8718696806180

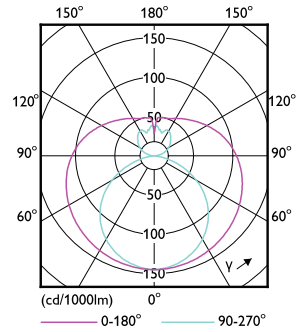
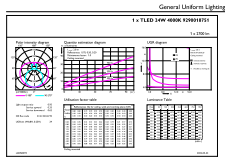
Dimensional drawing



Product	D1	D2	A1	A2	A3
CorePro LEDtube 1500mm HO 24W 840 T8	25.7 mm	28 mm	1,500 mm	1,507.1 mm	1,514.2 mm

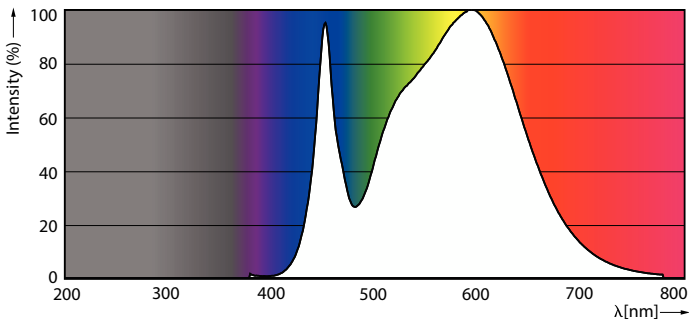
CorePro LEDtube EM/Mains T8

Photometric data



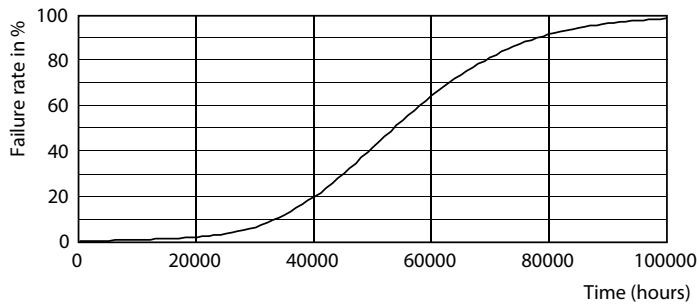
General uniform lighting - CorePro LEDtube 1500mm HO 24W 840 T8

Light Distribution Diagram - CorePro LEDtube 1500mm HO 24W 840 T8

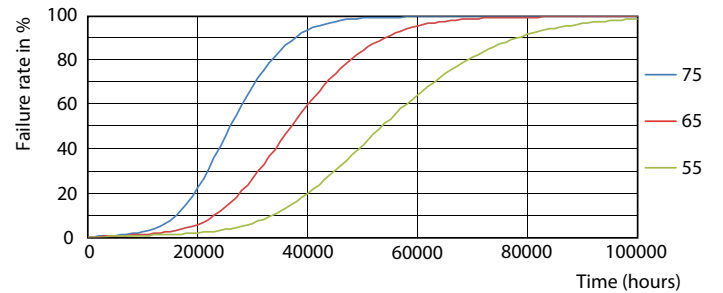


Spectral Power Distribution Colour - CorePro LEDtube 1500mm HO 24W 840 T8

Lifetime



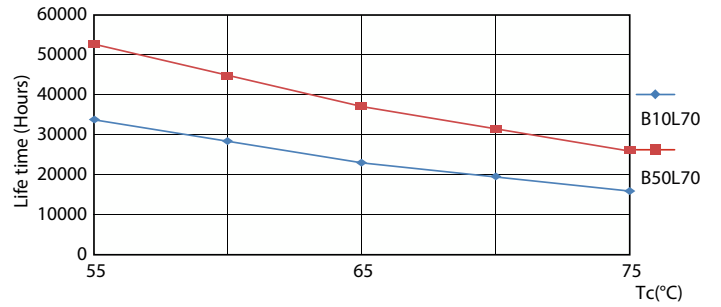
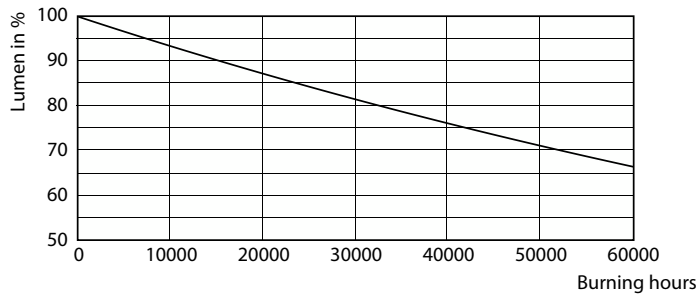
Life Expectancy Diagram - CorePro LEDtube 1500mm HO 24W 840 T8



Life Expectancy Diagram

CorePro LEDtube EM/Mains T8

Lifetime



Lumen Maintenance Diagram - CorePro LEDtube 1500mm HO 24W 840 T8

Life Expectancy Diagram

