

Aluminium terminals, longitudinally sealed, KRA type

FEATURES & BENEFITS

- ring terminal Al, tight, as per DIN, without galvanic tin plating
- description of cable cross-section, terminal size and crimping die number on crimped part surface
- to be used in most demanding connections

MECHANICAL DATA

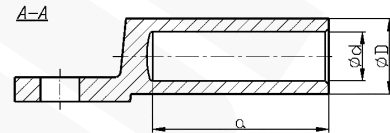
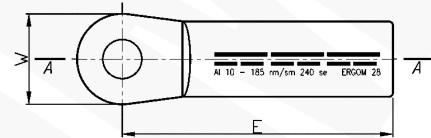
Material	Al
Covering	uncoated

CERTIFICATES & STANDARDS

Design	DIN 46329
--------	-----------

NOTE!

- terminals are filled with special contact grease, packed in a separate foil bag;
- sector-shaped conductors must be rounded with special dies.



Type	Index Ergom	Cross-section, re/se [mm ²]	Cross-section, rm/sm [mm ²]	d	D	a min	E	W	Screw hole	DIN	Socket code	Lz/s	Lz/w	Quantity in package [pcs]	Weight [kg]
KRA 16/8 (100 PCS)	E12KA-01010100100	25	16	5,4	12,0	30	50	25	M8	-	12	2	4	100	1,66
KRA 16/8 (10 PCS)	E12KA-01010100102								10	0,17					
KRA 16/10 (100 PCS)	E12KA-01010100200								M10	-				100	1,62
KRA 16/10 (10 PCS)	E12KA-01010100202								M10	-				10	0,17
KRA 16/12 (100 PCS)	E12KA-01010100300								M12	-				100	1,54
KRA 16/12 (10 PCS)	E12KA-01010100302								M12	-				10	0,16
KRA 25/8 (100 PCS)	E12KA-01010100400	35	25	6,8	12,0	30	50	25	M8	-	12	2	4	100	1,54
KRA 25/8 (10 PCS)	E12KA-01010100402								M8	-				10	0,16
KRA 25/10 (100 PCS)	E12KA-01010100500								M10	√				100	1,53
KRA 25/10 (10 PCS)	E12KA-01010100502								M10	√				10	0,16
KRA 25/12 (100 PCS)	E12KA-01010100600								M12	-				100	1,45
KRA 25/12 (10 PCS)	E12KA-01010100602								M12	-				10	0,15
KRA 35/8 (100 PCS)	E12KA-01010100700	50	35	8,0	14,0	42	62	25	M8	-	14	3	5	100	2,3
KRA 35/8 (10 PCS)	E12KA-01010100702								M8	-				10	0,23
KRA 35/10 (100 PCS)	E12KA-01010100800								M10	√				100	2,3
KRA 35/10 (10 PCS)	E12KA-01010100802								M10	√				10	0,23
KRA 35/12 (100 PCS)	E12KA-01010100900								M12	-				100	2,1
KRA 35/12 (10 PCS)	E12KA-01010100902								M12	-				10	0,21
KRA 35/14 (100 PCS)	E12KA-01010101000	70	50	9,8	16,0	42	62	25	M14	-	16	3	5	100	1,82
KRA 35/14 (10 PCS)	E12KA-01010101002								M14	-				10	0,19
KRA 50/8 (100 PCS)	E12KA-01010101100								M8	-				100	2,8
KRA 50/8 (10 PCS)	E12KA-01010101102								M8	-				10	0,28
KRA 50/10 (100 PCS)	E12KA-01010101200								M10	√				100	2,8
KRA 50/10 (10 PCS)	E12KA-01010101202								M10	√				10	0,28
KRA 50/12 (100 PCS)	E12KA-01010101300	M12	-	100	2,8										
KRA 50/12 (10 PCS)	E12KA-01010101302					10	0,28								
KRA 50/14 (100 PCS)	E12KA-01010101450					M14	-	100	2,4						
KRA 50/14 (10 PCS)	E12KA-01010101452					M14	-	10	0,24						

Type	Index Ergom	Cross-section, re/se [mm ²]	Cross-section, rm/sm [mm ²]	d	D	a min	E	W	Screw hole	DIN	Socket code	Lz/s	Lz/w	Quantity in package [pcs]	Weight [kg]											
KRA 70/8 (100 PCS)	E12KA-01010101500	95	70	11,2	18,5	52	72	25	M8	√	18	3	6	100	3,25											
KRA 70/8 (10 PCS)	E12KA-01010101502								10					0,33												
KRA 70/10 (100 PCS)	E12KA-01010101600								M10					100	3,95											
KRA 70/10 (10 PCS)	E12KA-01010101602								M10					10	0,4											
KRA 70/12 (100 PCS)	E12KA-01010101700								M12					100	3,6											
KRA 70/12 (10 PCS)	E12KA-01010101702								M12					10	0,36											
KRA 70/14 (100 PCS)	E12KA-01010101800								M14					100	3,73											
KRA 70/14 (10 PCS)	E12KA-01010101802								M14					10	0,38											
KRA 70/16 (100 PCS)	E12KA-01010101900								M16					100	3,45											
KRA 70/16 (10 PCS)	E12KA-01010101902								M16					10	0,35											
KRA 95/10 (50 PCS)	E12KA-01010102000								120					95	13,2	22,0	56	75	25	M10	√	22	3	6	50	2,87
KRA 95/10 (10 PCS)	E12KA-01010102002																			M10					10	0,58
KRA 95/12 (50 PCS)	E12KA-01010102100																			M12					50	2,74
KRA 95/12 (10 PCS)	E12KA-01010102102																			M12					10	0,55
KRA 95/14 (50 PCS)	E12KA-01010102200																			M14					50	2,65
KRA 95/14 (10 PCS)	E12KA-01010102202																			M14					10	0,53
KRA 95/16 (50 PCS)	E12KA-01010102300	M16	50	2,71																						
KRA 95/16 (10 PCS)	E12KA-01010102302	M16	10	0,55																						
KRA 120/10 (50 PCS)	E12KA-01010102400	150	120	14,7	23,0	56	80	30	M10	√	22	3	6	50	3,24											
KRA 120/10 (10 PCS)	E12KA-01010102402								M10					10	0,65											
KRA 120/12 (50 PCS)	E12KA-01010102500								M12					50	3,2											
KRA 120/12 (10 PCS)	E12KA-01010102502								M12					10	0,64											
KRA 120/14 (50 PCS)	E12KA-01010102600								M14					50	3,2											
KRA 120/14 (10 PCS)	E12KA-01010102602								M14					10	0,64											
KRA 120/16 (50 PCS)	E12KA-01010102700								M16					50	3,3											
KRA 120/16 (10 PCS)	E12KA-01010102702								M16					10	0,66											
KRA 150/10 (50 PCS)	E12KA-01010102800	185	150	16,3	25,0	60	90	30	M10	√	25	3	6	50	4,4											
KRA 150/10 (10 PCS)	E12KA-01010102802								M10					10	0,88											
KRA 150/12 (50 PCS)	E12KA-01010102900								M12					50	4,4											
KRA 150/12 (10 PCS)	E12KA-01010102902								M12					10	0,88											
KRA 150/14 (50 PCS)	E12KA-01010103000								M14					50	4,2											
KRA 150/14 (10 PCS)	E12KA-01010103002								M14					10	0,84											
KRA 150/16 (50 PCS)	E12KA-01010103100								M16					50	4,3											
KRA 150/16 (10 PCS)	E12KA-01010103102								M16					10	0,86											
KRA 150/20 (50 PCS)	E12KA-01010103200								M20					50	4,1											
KRA 150/20 (10 PCS)	E12KA-01010103202								M20					10	0,82											
KRA 185/10 (50 PCS)	E12KA-01010103300	240	185	18,3	28,5	60	91	30	M10	√	28	3	6	50	5,25											
KRA 185/10 (10 PCS)	E12KA-01010103302								M10					10	1,05											
KRA 185/12 (50 PCS)	E12KA-01010103400								M12					50	5,5											
KRA 185/12 (10 PCS)	E12KA-01010103402								M12					10	1,1											
KRA 185/14 (50 PCS)	E12KA-01010103500								M14					50	5,75											
KRA 185/14 (10 PCS)	E12KA-01010103502								M14					10	1,15											
KRA 185/16 (50 PCS)	E12KA-01010103600								M16					50	5,4											
KRA 185/16 (10 PCS)	E12KA-01010103602								M16					10	1,08											
KRA 185/20 (50 PCS)	E12KA-01010103700								M20					50	5,4											
KRA 185/20 (10 PCS)	E12KA-01010103702								M20					10	1,08											
KRA 240/10 (50 PCS)	E12KA-01010103800	300	240	21,0	32,0	70	103	38	M10	√	32	3	8	50	8,2											
KRA 240/10 (10 PCS)	E12KA-01010103802								M10					10	1,64											
KRA 240/12 (50 PCS)	E12KA-01010103900								M12					50	8,4											
KRA 240/12 (10 PCS)	E12KA-01010103902								M12					10	1,68											
KRA 240/14 (50 PCS)	E12KA-01010104000								M14					50	7,95											
KRA 240/14 (10 PCS)	E12KA-01010104002								M14					10	1,59											
KRA 240/16 (50 PCS)	E12KA-01010104100								M16					50	8											
KRA 240/16 (10 PCS)	E12KA-01010104102								M16					10	1,6											
KRA 240/20 (50 PCS)	E12KA-01010104200								M20					50	7,75											
KRA 240/20 (10 PCS)	E12KA-01010104202								M20					10	1,55											

Type	Index Ergom	Cross-section, re/se [mm ²]	Cross-section, rm/sm [mm ²]	d	D	a min	E	W	Screw hole	DIN	Socket code	Lz/s	Lz/w	Quantity in package [pcs]	Weight [kg]
KRA 300/12 (25 PCS)	E12KA-01010104300	-	300	23,3	34,0	70	103	38	M12	√	34	3	8	25	3,61
KRA 300/12 (10 PCS)	E12KA-01010104302								10	1,45					
KRA 300/14 (25 PCS)	E12KA-01010104400								M14	-				25	4,1
KRA 300/14 (10 PCS)	E12KA-01010104402								M14	-				10	1,64
KRA 300/16 (25 PCS)	E12KA-01010104500								M16	√				25	4,3
KRA 300/16 (10 PCS)	E12KA-01010104502								M16	√				10	1,72
KRA 300/20 (25 PCS)	E12KA-01010104600								M20	√				25	4,2
KRA 300/20 (10 PCS)	E12KA-01010104602								M20	√				10	1,68

Lz/s - Number of crimping - wide, Lz/w - Number of crimping - narrow